

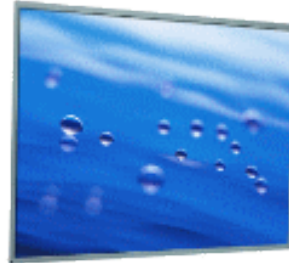


DLF/ DLH1954 V2
19" TFT LCD, LED Backlight 1000nits,SXGA

19" TFT LCD panel, built-in 1000 nits high bright for sunlight readable LCD display, high transmittance color filter, high transmission polarizing plates, Low Power Consumption, suitable for kiosk, advertising, POS, marine, transportation, gaming, studio display, gas pump.

Key Features

- Sunlight Readable
- LED Backlight
- High Shock & Vibration Resistance
- Low Power Consumption
- High Uniformity
- Low EMI Noise
- Wide Dimming
- Life Expectancy



Specifications

V1

Model No.	DLF1954 V2	DLH1954 V2
Description	19" TFT LCD, LED Backlight 1000nits,SXGA	
Display Area (mm)	376.32 x 301.06 mm	
Brightness	1000 cd/m ²	
Resolution	1280x1024 (SXGA)	
Contrast Ratio	1000 : 1	
Pixel Pitch (mm)	0.294(H) x 0.294(V)	
Viewing Angle	+85°~ -85°(H), +80°~ -80°(V)	
Display Colors	16.7M	
Response Time (Typical)	5ms	
Sync	LVDS	
Power Consumption	21W / 25W	
Dimensions (mm)	396x324x11.4	
Weight (Net)	2.67Kg	
LED Driving Board	LID 19A	
Control Board (Optional)	<input type="checkbox"/> AD6038GA <input type="checkbox"/> AD6038GD <input type="checkbox"/> AD2662GDHVA <input type="checkbox"/> AD2662GDVAR	
<input type="checkbox"/> AD6038GA	VGA+Audio	
<input type="checkbox"/> AD6038GD	VGA+DVI	
<input type="checkbox"/> AD2662GDHVA	VGA+CVBS+S-Video+Audio (Optional DVI / Component)	
<input type="checkbox"/> AD2662GDVAR	VGA+DVI (Optional S-Video/ Component / Audio)	
Control Button	<input type="checkbox"/> 4 Key	
<input type="checkbox"/> 4 Key	Power Switch, Menu, Select (+,-),	
OSD Menu	Brightness, Contrast, H/V Position, Color, Phase, Clock...	
Optional	<input type="checkbox"/> AOT <input type="checkbox"/> Touch Screen	

Specifications are subject to change without notice.

All brands or product names are trademarks or registered trademarks of their respective companies.

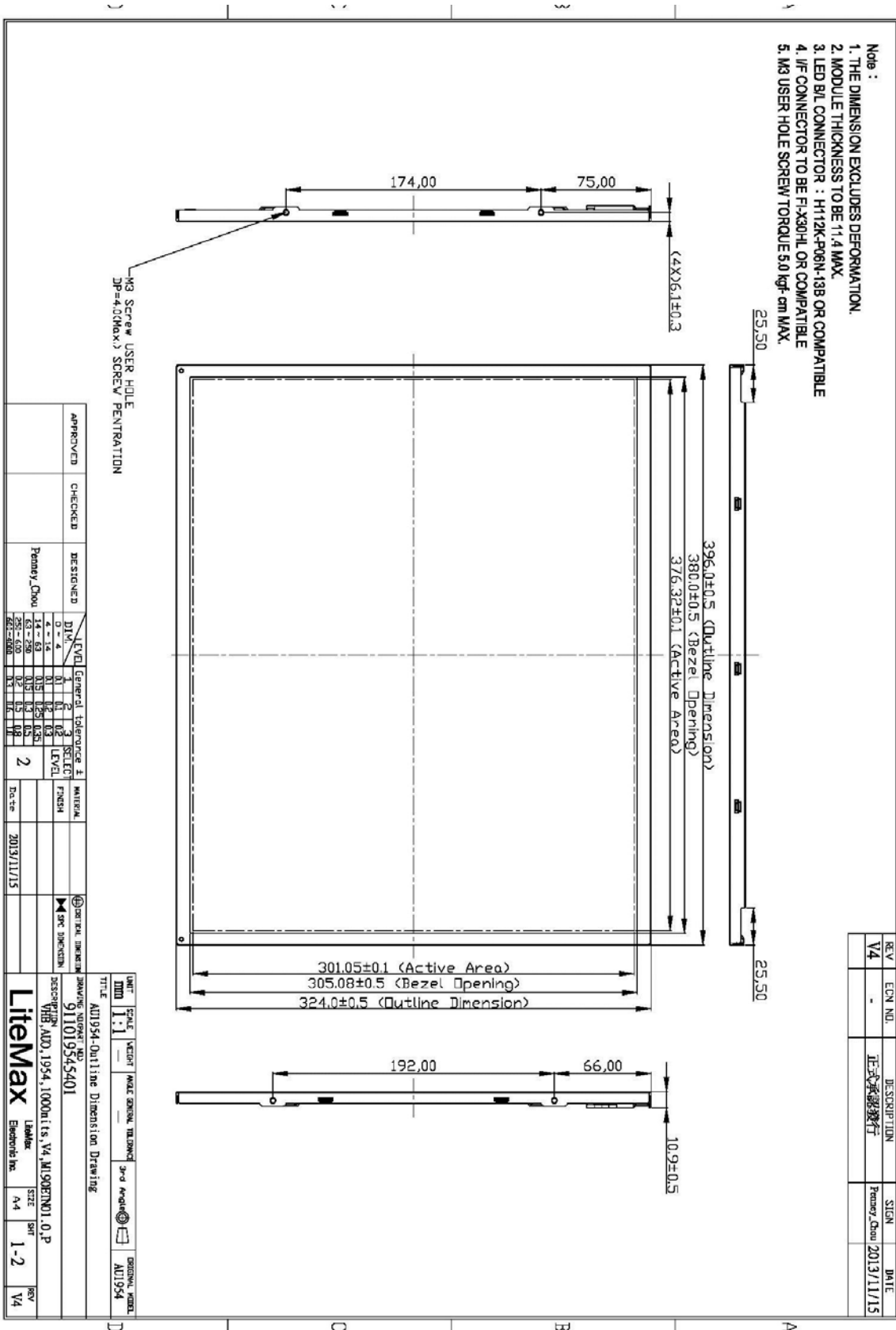
DLF= Panel+LED Driving Board

DLH= Panel+LED Driving Board+Control Board

Mechanical Drawing

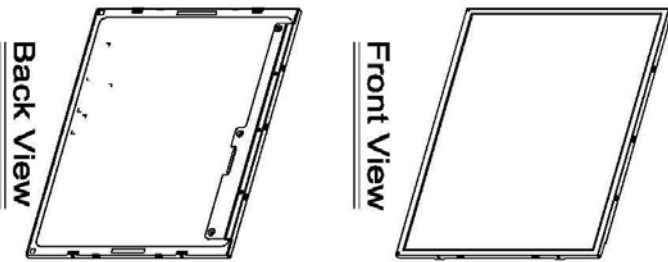
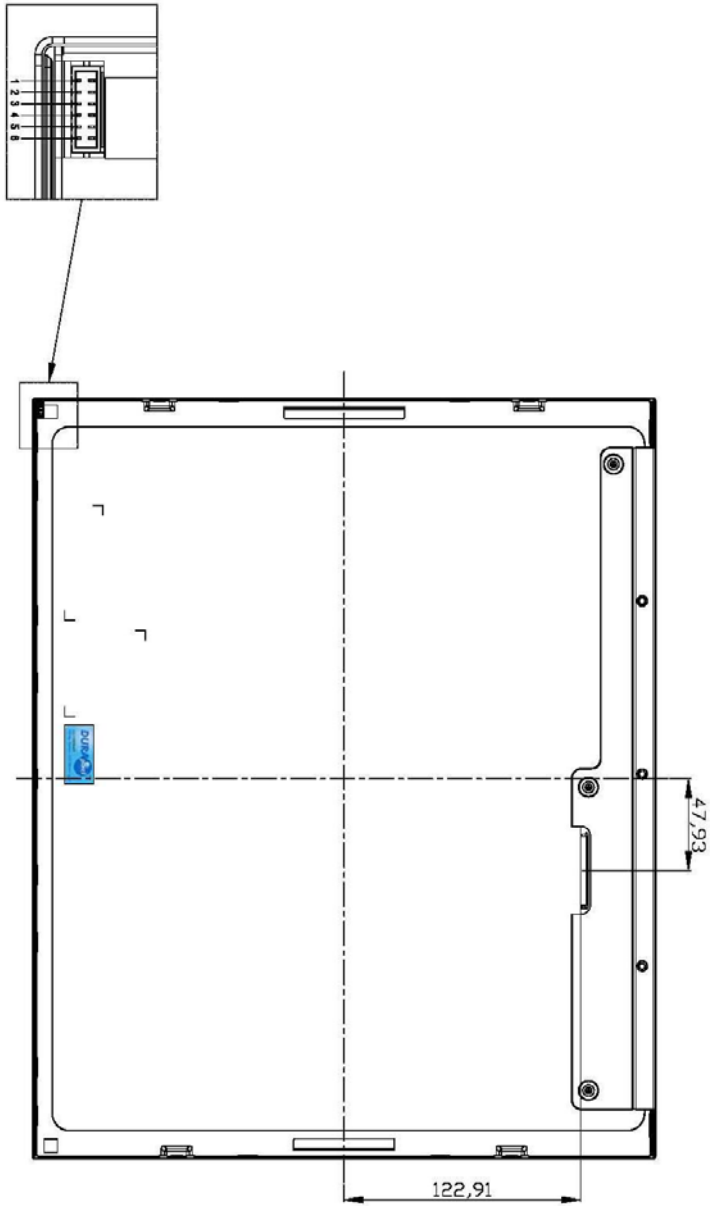


Outline Dimensions Unit:mm





- Note :
1. THE DIMENSION EXCLUDES DEFORMATION.
 2. MODULE THICKNESS TO BE 11.4 MAX.
 3. LED B/L CONNECTOR : H112K-F08N-13B OR COMPATIBLE
 4. I/F CONNECTOR TO BE FI-X30HL OR COMPATIBLE
 5. M3 USER HOLE SCREW TORQUE 5.0 kgf-cm MAX.



Pin No.	Symbol	Description
1	VCC-	Negative
2	VCC-	Negative
3	VCC+	Positive
4	VCC+	Positive
5	VCC-	Negative
6	VCC-	Negative

APPROVED	CHECKED	DESIGNED	LEVEL	General tolerance ±	SELECTED FINISH	DATE
		Penny, Dion	0 - 4	1 2 3	MATERIAL	
			4 - 14	0.1 0.2	FINISH	
			14 - 63	0.15 0.25 0.3		
			63 - 630	0.3 0.5 1 1.5		
			630 - 8000	0.5 1 1.5 2		

UNIT	SCALE	WEIGHT	ANGLE	GENERAL TOLERANCE	3rd Angle	ORIGINAL MODEL
MM	1:1					AU1954

TITLE: AU1954-Outline Dimension Drawing
 DRAWING NUMBER: 911019545401
 DESCRIPTION: V4B, AU1954, 1000units, V4, M190E7N01, 0,P
 Litemax
 Label: Litemax
 Electronic Inc.

SIZE	SRT	REV
A4	2-2	V4

REV	EQD. NO.	DESCRIPTION	SIGN	DATE
V4		正式承認發行	Penny, Dion	2013/11/15

A4 297x210mm



Ordering Information

Part Number	Description
DLF1954-ENN-A11	19",1000nits,SXGA,LID19A,V02
DLH1954-ENN-I11	19",1000nits,SXGA,LID19A,AD6038G,DC 12V input,V02
DLH1954-ENN-I12	19",1000nits,SXGA,LID19A,AD6038GD,DC 12V input,V02

Optional Accessories

Part Number	Description
840612051100	ADAPTER.12V.5A.60W.EA1050A,P
810618301010	CABLE.POWER.AC.1830mm USA type
810618301090	CABLE,POWER,AC,1830mm Europe type
810618301050	CABLE.POWER.AC.1830mm UK type
810618301170	CABLE.POWER,AC,1830mm Australia type
810618301030	CABLE.POWER.AC.1830mm Japan type