



DLF2425 / DLH2425

24" TFT LCD, Wide Viewing Angle, LED Backlight 1000nits,FHD(1920x1080)

24" TFT LCD panel, built-in 1000 nits high bright for sunlight readable LCD display, high transmittance color filter, high transmission polarizing plates, Low Power Consumption, suitable for kiosk, advertising, POS, marline, transportation, gaming, studio display, gas pump.

Key Features

- Sunlight Readable
- LED Backlight
- FHD(1920x1080) High Definition
- High Shock & Vibration Resistance
- Low Power Consumption
- LCD blacking defect free (Hi-Tni 110°C)
- Wide Viewing Angle
- High Uniformity
- Low EMI Noise
- Wide Dimming
- Life Expectancy
- Wide Operation Temperature (-20~70 °C)
- BL MTBF: 70,000 hours



Specifications

V1

Model No.	DLF2425	DLH2425
Description	24" TFT LCD, LED Backlight 1000nits,FHD(1920x1080)	
Display Area (mm)	531.36 x 298.89 mm	
Brightness	1000 cd/m ²	
Resolution	1920x1080 (FHD)	
Contrast Ratio	5000 : 1	
Pixel Pitch (mm)	0.276(H) x 0.276(V)	
Viewing Angle	+89°~-89°(H), +89°~-89°(V)	
Display Colors	16.7M	
Response Time (Typical)	25ms	
Sync	LVDS	
Power Consumption	30W / 38W	
Dimensions (mm)	555.9x323.3x14.6 mm	
Weight (Net)	2.67Kg	
LED Driving Board	LID24A	
Control Board (Optional)	<input type="checkbox"/> AD2662GD <input type="checkbox"/> AD2662GDVAR <input type="checkbox"/> AD2662GD VGA+DVI <input type="checkbox"/> AD2662GDVAR VGA+DVI (Optional S-Video/Component / Audio)	
F / R Control Button	<input type="checkbox"/> 4 Key <input type="checkbox"/> 4 Key Power Switch, Menu, Select (+,-),	
OSD Menu	Brightness, Contrast, H/V Position, Color, Phase, Clock...	
Optional	<input type="checkbox"/> AOT <input type="checkbox"/> Touch Screen	

Specifications are subject to change without notice.

All brands or product names are trademarks or registered trademarks of their respective companies.

DLF= Panel+LED Driving Board

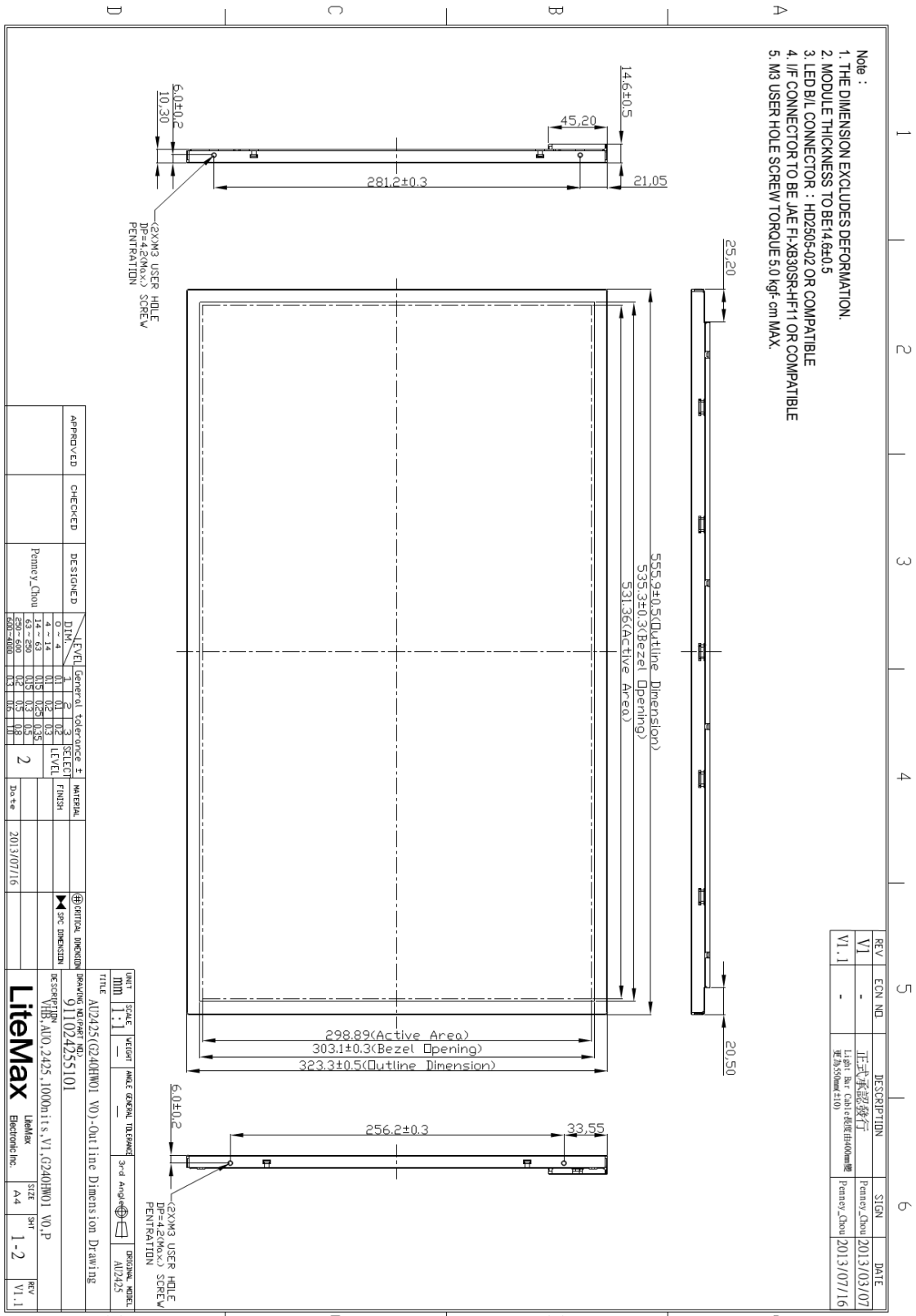
DLH= Panel+LED Driving Board+Control Board



Mechanical Drawing

Outline Dimensions

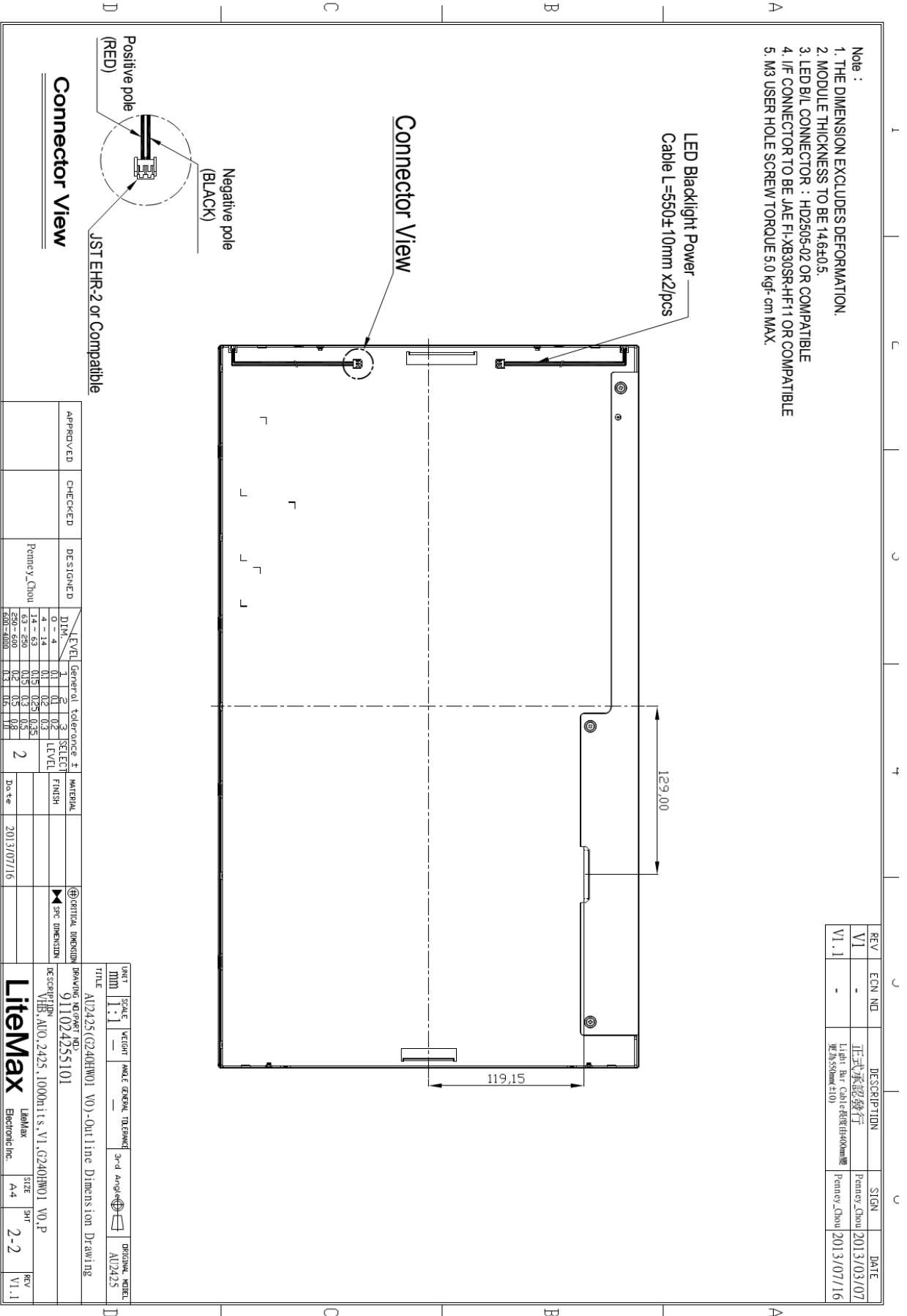
Unit:mm



44 207~210mm



- Note :
1. THE DIMENSION EXCLUDES DEFORMATION.
 2. MODULE THICKNESS TO BE 14.6±0.5
 3. LED B/L CONNECTOR : HD2605-02 OR COMPATIBLE
 4. I/F CONNECTOR TO BE JAE FI-XB30SR-HF11 OR COMPATIBLE
 5. M3 USER HOLE SCREW TORQUE 5.0 kgf-cm MAX.



REV	ECN NO.	DESCRIPTION	SIGN	DATE
V1	-	正式承認發行	Penny, Chou	2013/03/07
V1.1	-	Light Bar Cable Reducer 40mm變更為55mm(±10)	Penny, Chou	2013/07/16

APPROVED	CHECKED	DESIGNED	DATE	GENERAL TOLERANCE ±	SELECTED TOLERANCE ±	MATERIAL	FINISH	DATE
		Penny, Chou		0.2 - 0.4	0.1 - 0.2			2013/07/16
				0.4 - 1.4	0.1 - 0.2			
				1.4 - 6.3	0.15 - 0.25			
				6.3 - 250	0.3 - 0.5			
				250 - 500	0.5 - 0.8			
				500 - 5000	0.8 - 1.0			

UNIT	SCALE	WEIGHT	ANGLE	TOLERANCE	3rd ANGLE	DIRECTION
mm	1:1					AU2425

TITLE: AU2425(G240HW01 VO)-Out line Dimension Drawing

DESCRIPTION: AU2425, 1000h11s, V1, G240HW01 VO, P

91102425101

LiteMax LiteMax Electronic Inc. SIZE: A4 SH: 2-2 REV: V1.1



Ordering Information

Part Number	Description
DLF2425-ENN-A01	24", 1000nits, FHD, LID24, V01
DLH2425-ENN-G01	24", 1000nits, FHD, LID24, AD2662GD, V01

Optional Accessories

Part Number	Description
840612051210	ADAPTER, AC/DC, 12V/5.4A, 65W, Atech OEM A065112-TDx, 4P SLIDING CAP, P,
810618301010	CABLE.POWER.AC.1830mm USA type
810618301090	CABLE.POWER.AC, 1830mm Europe type
810618301050	CABLE.POWER.AC.1830mm UK type
810618301170	CABLE.POWER.AC, 1830mm Australia type
810618301030	CABLE.POWER.AC.1830mm Japan type