

## NPD1744

### 17" IP65 Sunlight Readable Marine Display

NAVPIXEL NPD1744, the high-performance, rugged touch monitor, is specially engineered to survive from the most demanding working environment. Housed in a milled billet aluminum case, the slim-profile NAVPIXEL NPD1744 is light weight and watertight. The front-mounted sunlight readable touch screen makes the industrial rugged monitor vividly and user-friendly. In addition, the high power efficiency and low heat design guarantee the stability and longevity required for mission critical deployment.

#### Features:

- 1000 nits Sunlight Readable LCD
- Long Life, Low Power Consumption LED Backlight
- Wide Operating Temperature
- Picture In Picture Function
- Advanced Optical Bonding (AOT)
- High Shock & Vibration Resistance
- Resistive Touch Support
- IP65 Facial Waterproof
- 9-36V DC Input

#### Application:

- Marine



### Specifications

V1

<b>Model Number</b>	<b>NPD1744</b>
<b>LCD Display</b>	
<b>Backlight</b>	17" LED Backlight
<b>Active Display Area</b>	337.92 x 270.33m
<b>Brightness</b>	1000 cd/m <sup>2</sup>
<b>Resolution</b>	1280x1024(SXGA)
<b>Contrast Ratio</b>	800:1
<b>Pixel Pitch (mm)</b>	0.264(H) x 0.264 (V)
<b>Viewing Angle</b>	160 (H), 160(V)
<b>Display Color</b>	16.7M
<b>Response Time</b>	5ms
<b>Inputs</b>	VGx2, DVlx2, Compositex3, RS232x1, USBx1
<b>PIP Support</b>	3 Stages (child, split & wide screen)
<b>Mechanical</b>	
<b>IP Rating</b>	Fascial waterproof to IP65 standards when console mounted.
<b>Construction</b>	Rugged Aluminum Alloy Chassis
<b>Mounting</b>	Panel (Flush) mount, VESA mount
<b>Dimension (mm)</b>	384(W)x348.1(H)x57.8(D)
<b>Net Weight</b>	4.5kg
<b>Power</b>	
<b>Voltage</b>	DC Input Voltage: DC 9~36V
<b>Power Consumption</b>	50W
<b>Environmental</b>	
<b>Operating Temperature</b>	-10°C~50°C
<b>Non-Operating Temperature</b>	-20°C~70°C
<b>Certification</b>	Designed to meet CE / FCC Class A
<b>Marine Type Approval</b>	Marine BV certification, comply with IACS-E10 & IEC 60945

Specifications are subject to change without notice.

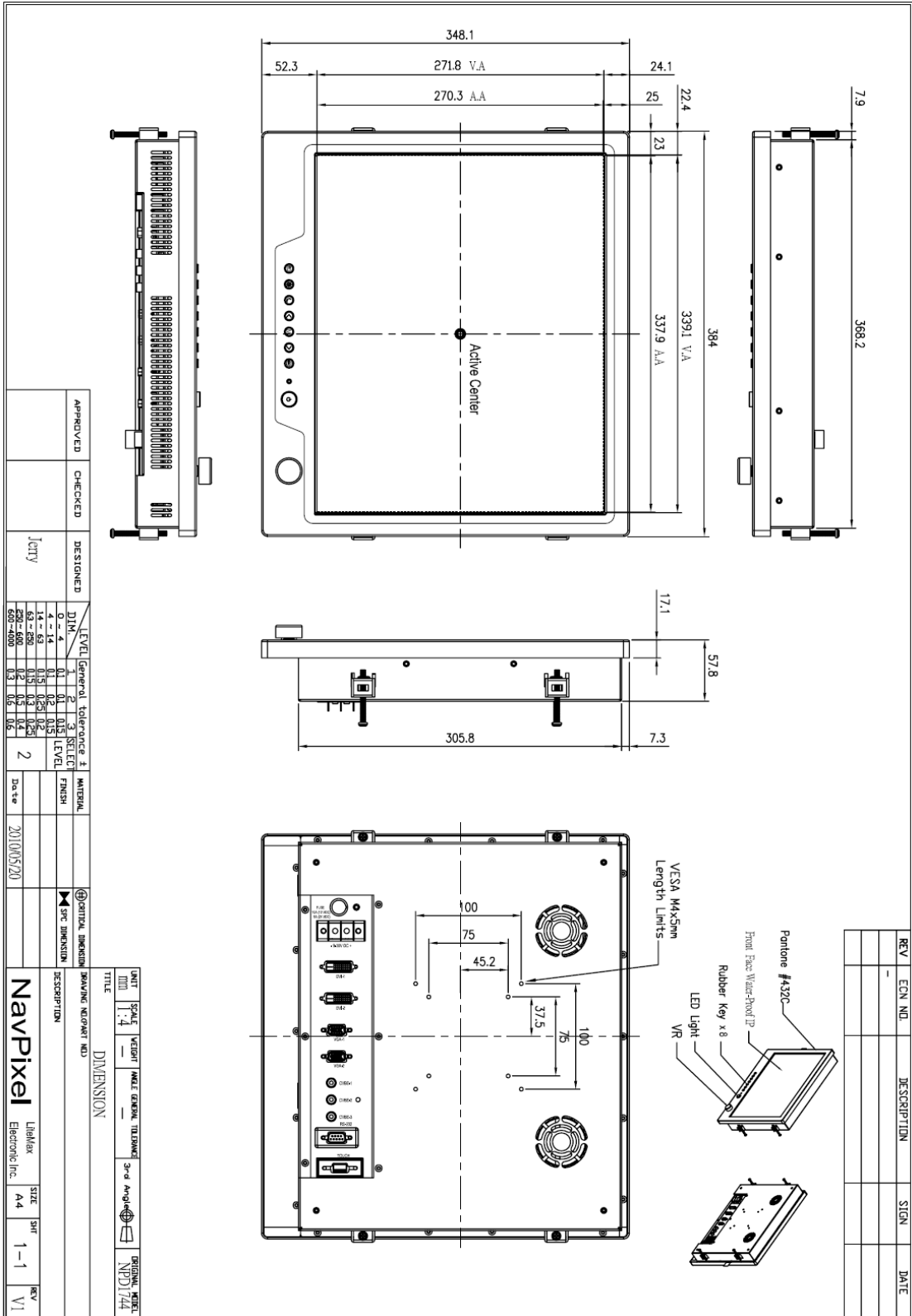
All brands or product names are trademarks or registered trademarks of their respective companies.



# Mechanical Drawing

## Outline Dimensions

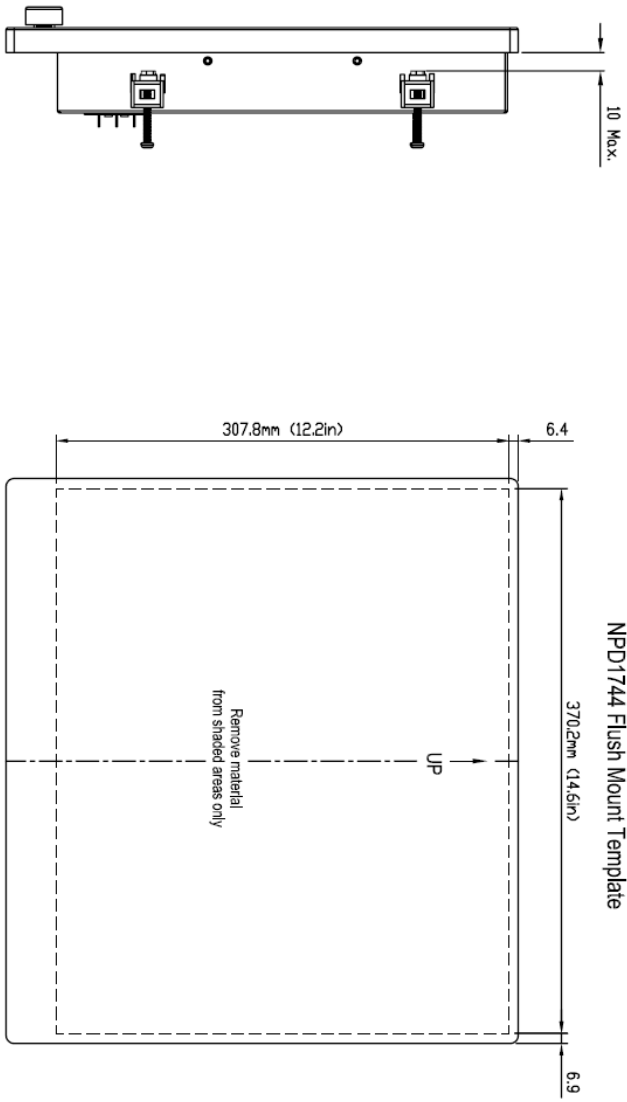
Unit:mm





REV	ECN NO.	DESCRIPTION	SIGN	DATE
Δ	-	Design drawing		2010/01/18

NPD1744 Flush Mount Template



Side View

Back View

APPROVED	CHECKED	DESIGNED	DATE
		J. Citty	2010/06/20

DIM.	LEVEL	General Tolerance ±	SELECT LEVEL	MATERIAL FINISH
0 - 4	1	0.1	0.1	
4 - 14	0.5	0.15	0.15	
14 - 25	0.2	0.25	0.25	
25 - 50	0.2	0.5	0.5	
50 - 100	0.3	0.5	0.5	
100 - 200	0.3	0.5	0.5	
200 - 400	0.3	0.5	0.5	

UNIT	SCALE	WEIGHT	ANGLE	GENERAL TOLERANCE	3rd ANGLE	ORIGINAL MODEL
mm	1:4	-	-	-	☉	NPD1744

TITLE	DESCRIPTION	SIZE	SHR	REV
Output Dimension	NavPixel	A4	2-2	V1



**Ordering Information**

Part Number	Description
NPD1744-EGAW-J01	17",1000nits,SXGA,AR glass.LID17B01,AD5827,WP,AOT,V01
NPD1744-EGAW-J011	17",1000nits,SXGA,AR glass.LID17B01,AD5827,WP,AOT.with adaptor,V01
NPD1744-ETAW-J01	17" ,1000nits, SXGA,Touch-usb.Transparency:80,LID17B01.AD5827,WP,AOT,V01
NPD1744-ETAW-J011	17",1000nits,SXGA,Touch-usb.(Transparency:80%),LID17B01.AD5827,WP,AOT,with adaptor.V01

**Optional Accessories**

Part Number	Description
980000300010	SET,OTHER,CD for User.Menu&Touch driver(NPD series)
810650005110	CABLE,POWER,DC,5000mm,TER.MINAL TO OPEN,14AWG*2C+BRA.ID,COOL GRAY 7C PVC JACKET,P
810130001000	CABLE.VGA.3000mm.D-SUB15P MALE.BLUE TO D-SUB 15P MALE BLUE.BLACK.P
321189155501	Print,Menu,User,NPD.1555,V0,series,P
321179174401	Print,Menu,Install,NPD,1744,V0.Flush mount template,P
112615315401 x (4)	Metal,SPCC,NPS,1531,Lock,V0,P
214032121101 x (4)	Screw,M4,32mm,Round,Ni,P
460100002101 x (4)	Fixture,other,MP-4,V0,P
980000560010 (Optional)	SET,OTHER,ADAPTER REWORK.60W KPA-060F WITH Y TYPE.TERMINAL,P
810618301010 (Optional)	CABLE.POWER.AC.1830mm USA type
810618301090 (Optional)	CABLE,POWER,AC,1830mm Europe type
810618301050 (Optional)	CABLE.POWER.AC.1830mm UK type
810618301170 (Optional)	CABLE.POWER,AC,1830mm Australia type
810618301030 (Optional)	CABLE.POWER.AC.1830mm Japan type