



## SSF2945/SSH2945-E V2

### 29.3" Resizing LCD, 1000 nits LED backlight, 1920x710 ultra wide aspect ratio 16:6

SSF/SSH2945-E V2 is an innovative ultra-wide, sunlight readable, LED backlight LCD display. It provides LCD panel with specific ratios for digital signage, public transportation, exhibition hall, department store, vending machine and industrial applications. Incorporating with A.D. control board and backlight design, it is high brightness and sunlight readable panel, can display high-quality video with energy-efficient.

#### Key Features

- Resizing LCD
- Ultra Wide Screen (16 : 6)
- Sunlight Readable
- LED Backlight
- High Brightness 1000 nits
- Low Power Consumption
- Wide Dimming
- Life Expectancy (70,000hrs)



### Specifications

V1

<b>Model No.</b>	<b>SSF2945/SSH2945-E V2</b>
<b>Description</b>	29.3" Resizing LCD, 1000 nits LED backlight
<b>Display Area</b>	698.4*258.2 mm
<b>Brightness</b>	1000 cd/m <sup>2</sup>
<b>Resolution</b>	1920 x 710
<b>Aspect Ratio</b>	16 : 6
<b>Contrast Ratio</b>	3000:1
<b>Pixel Pitch (mm)</b>	0.3637 x 0.3637
<b>Pixel Pre Inch (PPI)</b>	69.7
<b>Viewing Angle</b>	178°(H), 178°(V)
<b>Display Colors</b>	16.7M
<b>Response Time (Typical)</b>	8 ms
<b>Sync</b>	LVDS
<b>Power Consumption</b>	48W/53W
<b>Dimensions (mm)</b>	735.4 x 298.9 x 18.0
<b>Weight (Net)</b>	3.2 kg (VHB only)
<b>LED Driving Board</b>	<b>LID29A</b>
<b>Control Board (Optional)</b>	<b>AD2662GD / AD2662GDVAR</b>
<input type="checkbox"/> AD2662GD	VGA + DVI
<input type="checkbox"/> AD2662GDVAR	VGA + DVI (Optional AV/ S-Video / Component / Audio)
<input type="checkbox"/> Others	
<b>F / R Control Button</b>	5 Key / 4 Key
<input type="checkbox"/> 4 Key	Power Switch, Menu, Select (+,-),
<input type="checkbox"/> 5 Key	Power Switch, Menu, Select (+,-),Auto
<b>OSD Menu</b>	Brightness, Contrast, H/V Position, Color, Phase, Clock...
<b>Optional</b>	<input type="checkbox"/> Touch Screen

Specifications are subject to change without notice.

All brands or product names are trademarks or registered trademarks of their respective companies.

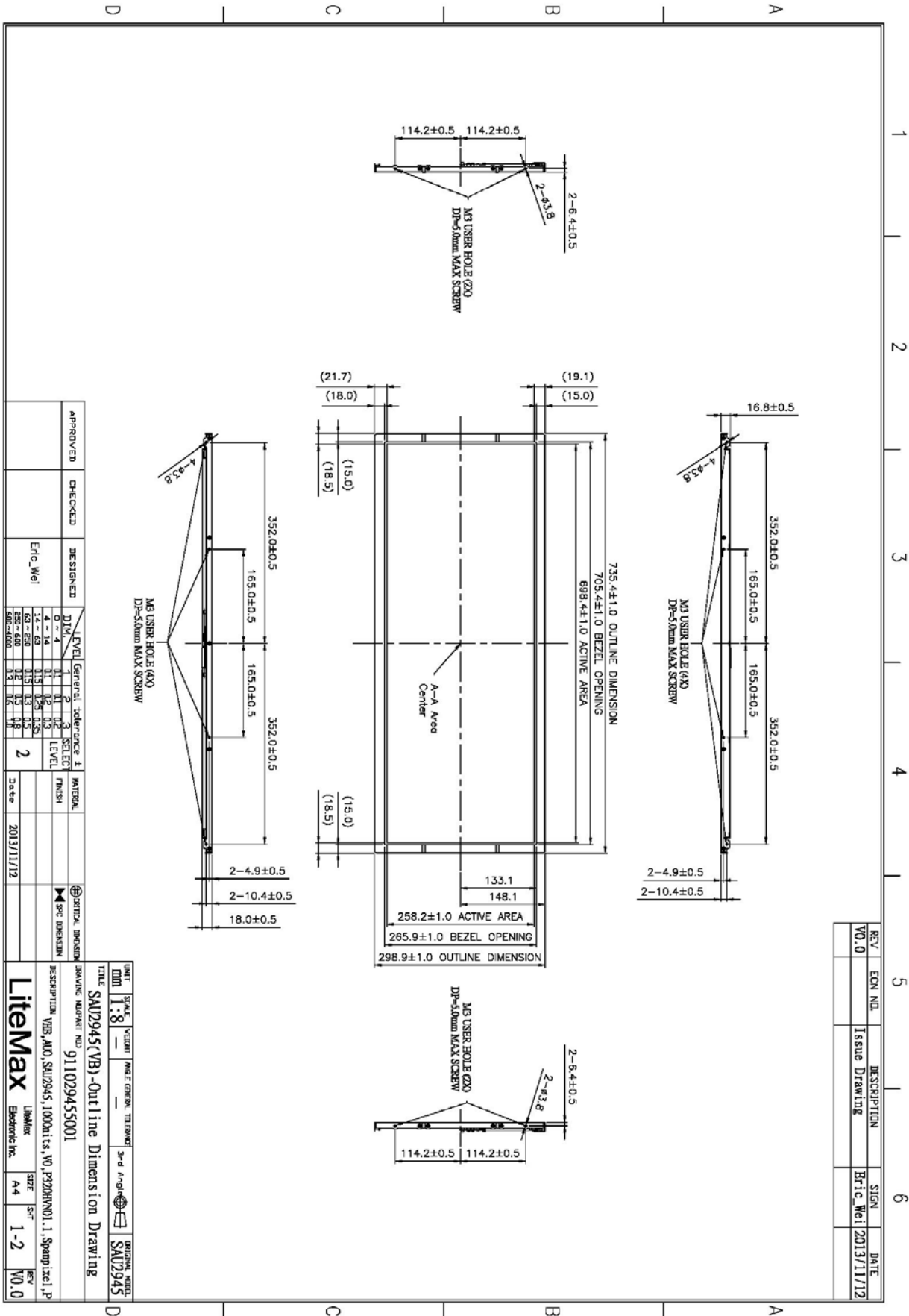
**SSF** = Panel+ LED Driving Board

**SSH** = Panel+ LED Driving Board + Control Board



# Mechanical Drawing

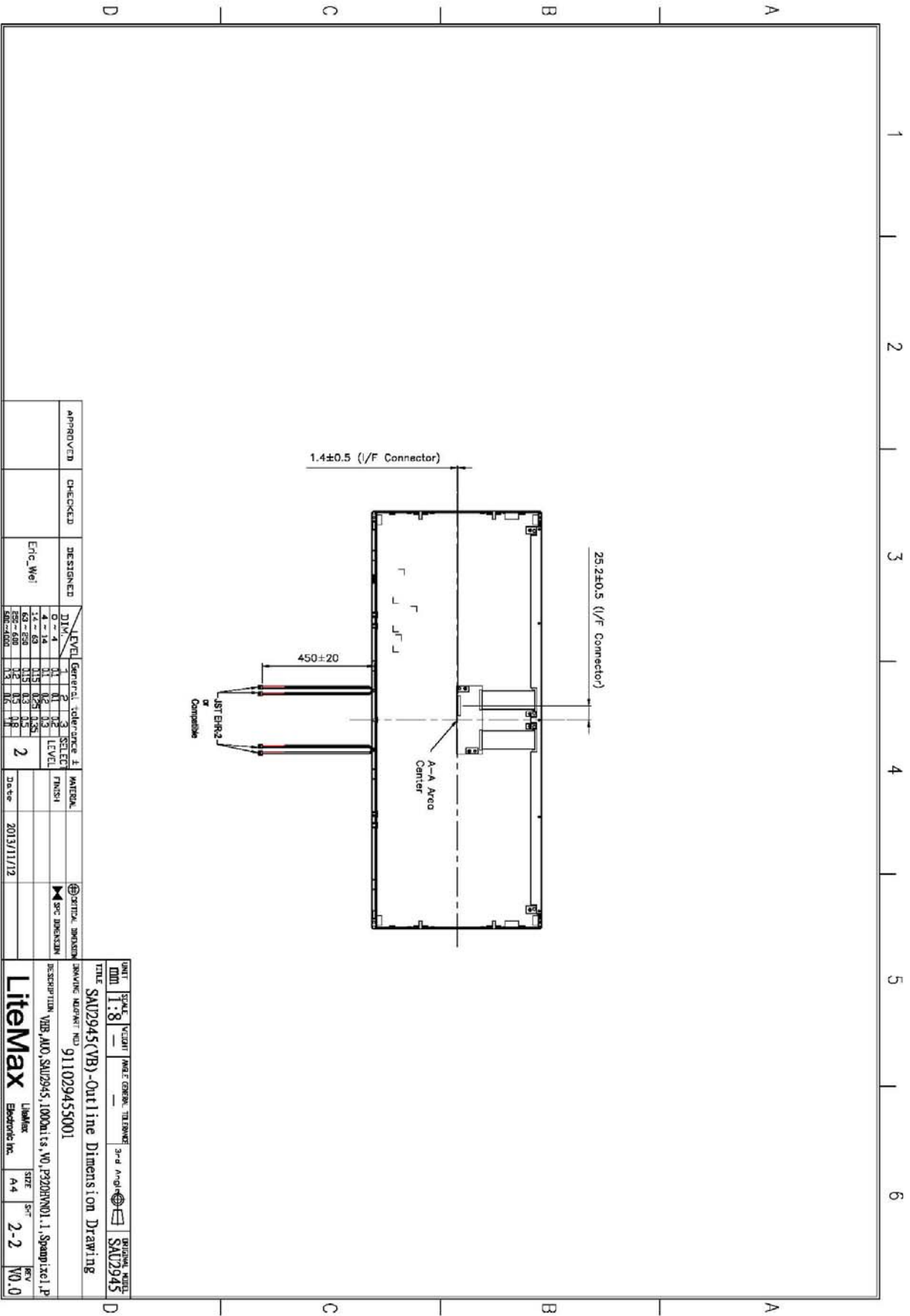
## Outline Dimensions



APPROVED	CHECKED	DESIGNED	DIV	LEVEL	General Tolerance 1	MATERIAL	DATE
		Eric Wei	0-4	1	2	FINISH	2013/11/12
			4-14	11	12		
			15-20	13	14		
			21-30	15	16		
			31-40	17	18		
			41-50	19	20		
			51-60	21	22		
			61-70	23	24		
			71-80	25	26		
			81-90	27	28		
			91-100	29	30		

UNIT	SCALE	VELOCITY	NAME	GENERAL TOLERANCE	3rd Angle Projection	ORIGINIAL FILE
mm	1:8					SAU2945
TITLE SAU2945(VB)-Outline Dimension Drawing						
DESCRIPTION VIB_AU0_SAU2945_1000units_V0_P20201101.1_Spand1x01.P						
DRAWING NUMBER: 9111029455001						
LitensMax						
Supplier	Linking	SIZE	SIZE	REV		
Escherich Inc.		A4	1-2	V0.0		

A4 297x210mm



APPROVED	CHECKED	DESIGNED	DATE	LEVEL	GENERAL TOLERANCE	STEEL	MATERIAL	OPTICAL DIMENSION
		Eric_Wei		1	0.1	1		▶ SPEC DIMENSION
				2	0.2	2		▶ SPEC DIMENSION
				3	0.3	3		▶ SPEC DIMENSION
				4	0.4	4		▶ SPEC DIMENSION
				5	0.5	5		▶ SPEC DIMENSION
				6	0.6	6		▶ SPEC DIMENSION
				7	0.7	7		▶ SPEC DIMENSION
				8	0.8	8		▶ SPEC DIMENSION
				9	0.9	9		▶ SPEC DIMENSION
				10	1.0	10		▶ SPEC DIMENSION
				11	1.1	11		▶ SPEC DIMENSION
				12	1.2	12		▶ SPEC DIMENSION
				13	1.3	13		▶ SPEC DIMENSION
				14	1.4	14		▶ SPEC DIMENSION
				15	1.5	15		▶ SPEC DIMENSION
				16	1.6	16		▶ SPEC DIMENSION
				17	1.7	17		▶ SPEC DIMENSION
				18	1.8	18		▶ SPEC DIMENSION
				19	1.9	19		▶ SPEC DIMENSION
				20	2.0	20		▶ SPEC DIMENSION
				21	2.1	21		▶ SPEC DIMENSION
				22	2.2	22		▶ SPEC DIMENSION
				23	2.3	23		▶ SPEC DIMENSION
				24	2.4	24		▶ SPEC DIMENSION
				25	2.5	25		▶ SPEC DIMENSION
				26	2.6	26		▶ SPEC DIMENSION
				27	2.7	27		▶ SPEC DIMENSION
				28	2.8	28		▶ SPEC DIMENSION
				29	2.9	29		▶ SPEC DIMENSION
				30	3.0	30		▶ SPEC DIMENSION

UNIT	SCALE	VELOCITY	ANGLE	GENERAL TOLERANCE	3rd ANGLE	ORIGINAL FILE
mm	1:8					SAU2945
TITLE SAU2945(VB)-Outline Dimension Drawing						
DRAWING NUMBER NO. 9111029455001						
DESCRIPTION VIB_A0_SAU2945_100units_V0_P220RHV01_1_Samp1xel.P						
Litemax		SIZE	REV			
Electronic Inc.		A4	2-2	V0.0		

A4 297x210mm



### Ordering Information

Model Name	Description
<b>SSF2945-ENN-A11</b>	29.3",1000nits,1920*710.LID29A,V02(2 in 1)
<b>SSH2945-ENN-G11</b>	29.3",1000nits,1920*710.LID29A,AD2662GD,DC 12V.V02(2 in 1)
<b>SSH2945-ENN-G12</b>	29.3",1000nits,1920*710.LID29A,AD2662GDHM,DC12V.V02(2 in 1)

### Optional Accessories

Part Number	Description
<b>810618301010 (Optional)</b>	CABLE.POWER.AC.1830mm.(US Type).3PIN PLUG TO SOCKET.SVT(SPT-2 )18AWG 3C BLACK,P.
<b>810618301090 (Optional)</b>	CABLE,POWER,AC,1830mm.(EU Type) 3PIN PLUG TO.SOCKET,H05VV-F 3G.0.75MMSQ BLACK,P
<b>810618301050 (Optional)</b>	CABLE,POWER,AC,1830mm.UK(FUSE) 3PIN PLUG TO.SOCKET,H05VV-F 3C(3G) 0.75MMSQ BLACK,P
<b>810618301170 (Optional)</b>	CABLE.POWER,AC,1830mm. (AU Type) 3PIN PLUG TO 2P SOCKET.LTSA 0.75MMSQ BLACK,P
<b>810618301030 (Optional)</b>	CABLE.POWER.AC.1830mm.(JP Type).2PIN PLUG Y TERMINAL TO. SOCKET.VCTF 3C 0.75MMSQ BLACK,P